

E26 LED Light Bulb Specs

Product Features

- Wide Input Range 100 ~ 240Vac Input
- High Power Factor > 0.98 at 110Vac
- All Power Range for Retrofit Market
- High CRI > 80
- No Blue Ray IEC 62471 and LM80 Certificated LED Chips
- Long Life Time.



Model Name	10W Bulb	20W Bulb	25W Bulb	36W Bulb	45W Bulb
Dimension Φ*L (mm)	60 x 125mm	94 x 180mm	94 x 180mm	130 x 240mm	130 x 240mm
Lamp Cap	E26	E26	E26	E26	E26
Input Voltage	100~264 VAC	100~277 VAC	100~277 VAC	100~277 VAC	100~277 VAC
Input Frequency	50 ~ 60 Hz	50 ~ 60 Hz	50 ~ 60 Hz	50 ~ 60 Hz	50 ~ 60 Hz
Power Factor	> 0.95	> 0.95	> 0.95	> 0.95	> 0.95
Input Wattage	10W ± 10%	20W ± 10%	25W ± 10%	36W ± 10%	45W ± 10%
Light Output @5700K	900 Lm	1700 Lm	2300 Lm	3300 Lm	4200 Lm
Color Temperature	5700K (Neutral White) / 3000K (Warm White)				
LED Chips					
CRI	> 80				
Protection	OVP / OCP / OTP				
LED Chip Numbers	COB	20 PCS	20 PCS	36 PCS	36 PCS
Weight	85 gm	250 gm	250 gm	450 gm	450 gm
Operation Temperature (Indoor use only)	-25°C ~ 50°C	-25°C ~ 50°C	-25°C ~ 50°C	-25°C ~ 50°C	-25°C ~ 50°C
Life Time	50000Hrs	50000Hrs	50000Hrs	50000Hrs	50000Hrs



E39 LED High Bay Bulb Specs

Product Features

- **World Smallest and Lightest**
- High Power Factor > 0.98 at 110Vac
- All Power Range for Retrofit Market
- **Flicker Free**
- High CRI > 80
- No Blue Ray IEC 62471 and LM80 Certificated LED Chips
- **Best Energy Saving: >120Lm/W**



Model Name	90W	120W	150W
Dimension Φ *L (mm)	220 x 300mm	220 x 300mm	220 x 300mm
Lamp Cap	E39	E39	E39
Input Voltage	100~277 VAC	198~277 VAC	198~277 VAC
Input Frequency	50 ~ 60 Hz	50 ~ 60 Hz	50 ~ 60 Hz
Power Factor	> 0.95	> 0.95	> 0.95
Input Wattage	90W \pm 10%	120W \pm 10%	150W \pm 10%
Light Output @5700K	11000 Lm	14500 Lm	18000 Lm
Color Temperature	5700K (Neutral White) / 4000K (Warm White)		
Lens Angle	60/90 degree		
LED Chips			
CRI	> 80		
Protection	OVP / OCP / OTP		
LED Chip Numbers	171 PCS	171 PCS	171 PCS
Weight	1500 gm	1500 gm	1500 gm
Operation Temperature (Indoor use only)	-25°C ~ 50°C	-25°C ~ 50°C	-25°C ~ 50°C
Life Time	50000Hrs	50000Hrs	50000Hrs



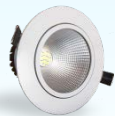
LED Down Light Specs

Product Features

- Wide Input Range 100 ~ 240Vac Input
- High Power Factor > 0.98 at 110Vac
- **No External Drive, for Easy Installation**
- High CRI > 80
- No Blue Ray IEC 62471 and LM80 Certificated LED Chips
- Long Life Time.



Adjustable Angle



Adjustable Angle



Model Name	10W MR16	10W AR111	10W 5"	12W 6"	16W 6" Slim
Dimension D*H	85 x 58mm	108 x 70mm	150 x 45mm	180 x 45mm	180 x 30mm
Installation Hole	70~75mm	90~95mm	115~120mm	145~150mm	145~150mm
Input Voltage	100~277 VAC	100~277 VAC	100~277 VAC	100~277 VAC	100~277 VAC
Input Frequency	50 ~ 60 Hz	50 ~ 60 Hz	50 ~ 60 Hz	50 ~ 60 Hz	50 ~ 60 Hz
Power Factor	> 0.95	> 0.95	> 0.95	> 0.95	> 0.95
Input Wattage	10W ± 10%	10W ± 10%	10W ± 10%	12W ± 10%	16W ± 10%
Light Output @5700K	800 Lm	800 Lm	600 Lm	750 Lm	1000 Lm
Lamp Cover	Clear	Clear/Milky	Milky	Milky	Milky
Color Temperature	5700K (Neutral White) / 3000K (Warm White)				
LED Chips	EVERLIGHT	EVERLIGHT	EVERLIGHT	LITEON	LITEON
CRI	> 80				
Protection	OVP / OCP / OTP				
Weight	150 gm	250 gm	120 gm	140 gm	200 gm
Operation Temperature (Indoor use only)	-25°C ~ 50°C	-25°C ~ 50°C	-25°C ~ 50°C	-25°C ~ 50°C	-25°C ~ 50°C
Life Time	50000Hrs	50000Hrs	50000Hrs	50000Hrs	50000Hrs



達源技術有限公司
EnergyPro Technology Co., Ltd.

LED Down Light Specs

Product Features

- Wide Input Range 100 ~ 240Vac Input
- High Power Factor > 0.98 at 110Vac
- **No External Drive, for Easy Installation**
- High CRI > 80
- No Blue Ray IEC 62471 and LM80 Certificated LED Chips
- Long Life Time.



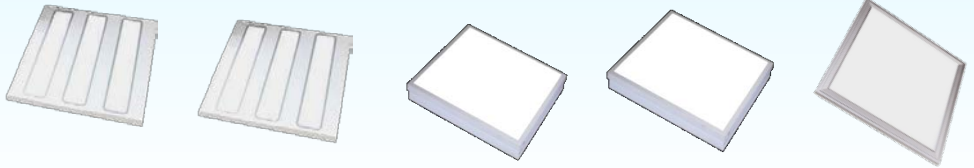
Model Name	24W 8"	30W 8"	24W 10"	30W 10"
Dimension D*H	225 x45mm	225 x45mm	270 x 50mm	270 x 50mm
Installation Hole	200mm	200mm	240mm	240mm
Input Voltage	100~277 VAC	100~277 VAC	100~277 VAC	100~277 VAC
Input Frequency	50 ~ 60 Hz	50 ~ 60 Hz	50 ~ 60 Hz	50 ~ 60 Hz
Power Factor	> 0.95	> 0.95	> 0.95	> 0.95
Input Wattage	24W ± 10%	30W ± 10%	24W ± 10%	30W ± 10%
Light Output @5700K	1800 Lm	2600 Lm	1800 Lm	2600 Lm
Lamp Cover	Milky/Fog	Milky/Fog	Milky/Fog	Milky/Fog
Color Temperature	5700K (Neutral White) / 3000K (Warm White)			
LED Chips	EVERLIGHT	NICHIA	EVERLIGHT	NICHIA
CRI	> 80			
Protection	OVP / OCP / OTP			
Weight	300 gm	300 gm	400 gm	400 gm
Operation Temperature (Indoor use only)	-25°C ~ 50°C	-25°C ~ 50°C	-25°C ~ 50°C	-25°C ~ 50°C
Life Time	50000Hrs	50000Hrs	50000Hrs	50000Hrs



LED Panel Light Specs

Product Features

- Wide Input Range 100 ~ 240Vac Input
- High Power Factor > 0.98 at 110Vac
- **No External Drive, for Easy Installation**
- High CRI > 80
- No Blue Ray IEC 62471 and LM80 Certificated LED Chips
- Long Life Time.



Model Name	30W Fighter	36W Standard	40W	40W	40W Ultra Slim
Dimension L*W*H (mm)	600 x 600x25mm	600 x 600x25mm	600 x 600x55mm	600 x 600x55mm	600 x 600x8mm
Diffuser	Fog	Fog	Crystal	Fog	Fog
Input Voltage	100~277 VAC	100~277 VAC	100~277 VAC	100~277 VAC	100~264 VAC
Input Frequency	50 ~ 60 Hz	50 ~ 60 Hz	50 ~ 60 Hz	50 ~ 60 Hz	50 ~ 60 Hz
Power Factor	> 0.95	> 0.95	> 0.95	> 0.95	> 0.95
Input Wattage	30W ± 10%	36W ± 10%	40W ± 10%	40W ± 10%	40W ± 10%
Light Output @5700K	2400 Lm	3600 Lm	3600 Lm	3200 Lm	4000 Lm
Color Temperature	5700K (Neutral White) / 3000K (Warm White)				
CRI	70/80				
Protection	OVP / OCP / OTP				
Weight	2000 gm	2000gm	2000 gm	2000 gm	2000 gm
Operation Temperature (Indoor use only)	-25°C ~ 50°C	-25°C ~ 50°C	-25°C ~ 50°C	-25°C ~ 50°C	-25°C ~ 50°C
Life Time	50000Hrs	50000Hrs	50000Hrs	50000Hrs	50000Hrs



LED Flood Light Specs

Product Features

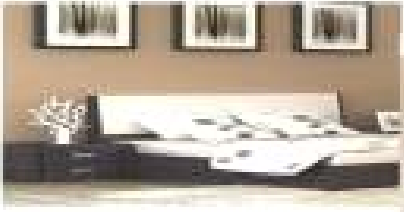
- **World Smallest and Lightest**
- High Power Factor > 0.98 at 110Vac
- All Power Range for Retrofit Market
- **D.O.B Technologies**
- High CRI > 80
- No Blue Ray IEC 62471 and LM80 Certificated LED Chips
- **Best Energy Saving: >120Lm/W**



Model Name	16W	75W	300W	600W
Dimension Φ *L (mm)	TBD	TBD	TBD	TBD
Mounting Type	Screw	Screw	Screw / Hook	Screw / Hook
Input Voltage	100~277 VAC	100~277 VAC	198~277 VAC	198~277 VAC
Input Frequency	50 ~ 60 Hz	50 ~ 60 Hz	50 ~ 60 Hz	50 ~ 60 Hz
Power Factor	> 0.95	> 0.95	> 0.95	> 0.95
Input Wattage	90W \pm 10%	75W \pm 10%	300W \pm 10%	600W \pm 10%
Light Output @5700K	1200 Lm	8000 Lm	36000 Lm	72000 Lm
Color Temperature	5700K (Neutral White) / 4000K (Warm White)			
Lens Angle	120 degree	90 degree	25 degree	25 degree
LED Chips	LITEON		NICHIA	
CRI	> 80			
Protection	OVP / OCP / OTP			
LED Chip Numbers	30 PCS	120 PCS	104 PCS	208 PCS
Weight	TBD	TBD	TBD	TBD
Operation Temperature (Indoor use only)	-25°C ~ 50°C	-25°C ~ 50°C	-25°C ~ 50°C	-25°C ~ 50°C
Life Time	50000Hrs	50000Hrs	50000Hrs	50000Hrs

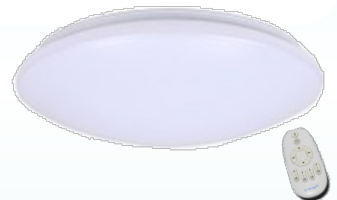


LED Ceiling Light Specs



Product Features

- Wide Input Range 100 ~ 240Vac Input
- High Power Factor > 0.98 at 110Vac
- **No External Drive, for Easy Installation**
- High CRI > 80
- No Blue Ray IEC 62471 and LM80 Certificated LED Chips
- Long Life Time.



Model Name	18W 250mm	24W 350mm	42W 400mm
Dimension L*W*H mm)	250 x 80mm	350 x 90mm	400 x 100mm
Dimming	NO	NO	AC Switch , Remote
Input Voltage	100~277 VAC	100~277 VAC	100~277 VAC
Input Frequency	50 ~ 60 Hz	50 ~ 60 Hz	50 ~ 60 Hz
LED Driver Efficiency	> 90 %	> 90%	> 90%
Power Factor	> 0.95	> 0.95	> 0.95
Input Wattage	18W ± 10%	24W ± 10%	42W ± 10%
Light Output @5700K	1600 Lm	2000 Lm	3800 Lm
Color Temperature	5700K or 3000K		3000 to 5700K
LED Chips	TAIWAN CHIPS (5700K (Neutral White) / 3000K (Warm White))		
CRI	> 80		
Protection	OVP / OCP / OTP		
LED Chip Numbers	96 PCS	96 PCS	130 +130 PCS
Weight	200 gm	300 gm	500 gm
Operation Temperature (Indoor use only)	-25°C ~ 50°C	-25°C ~ 50°C	-25°C ~ 50°C
Life Time	50000Hrs	50000Hrs	50000Hrs

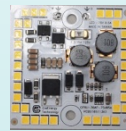


LED D.O.B. Module Specs

Input Voltage	100~277 VAC
Input Frequency	50 ~ 60 Hz
Power Factor	> 0.95
Color Temperature	5700K (Neutral White) / 3000K (Warm White)
CRI	> 80
Protection	OVP / OCP / OTP
Life Time	50000Hrs



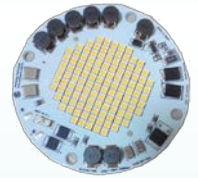
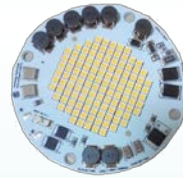
Model Name	10W	12W	16W	24W
Input Wattage	10W ± 10%	12W ± 10%	16W ± 10%	24W ± 10%
Dimension L*W(mm)	46mm(R)	80mm(R)	100mm(R)	110mm(R)
Light Output @5700K	1000 Lm	1200 Lm	1600 Lm	2400 Lm
LED Chip Numbers	15PCS	18 PCS	14PCS	48PCS
LED Chips				
PCB Material	Aluminum PCB	CEM-1 PCB	Aluminum PCB	CEM-1 PCB



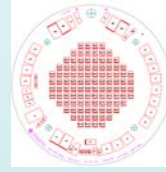
Model Name	30W	50W	36W	45W
Input Wattage	30W ± 10%	50W ± 10%	36W ± 10%	45W ± 10%
Dimension L*W(mm)	100mm(R)	100mm(R)	45 x 45mm	45 x 45mm
Light Output @5700K	3300 Lm	6000 Lm	4200 Lm	5200 Lm
LED Chip Numbers	20PCS	44 PCS	36 PCS	36 PCS
LED Chips				
PCB Material	Aluminum PCB	Aluminum PCB	Aluminum PCB	Aluminum PCB

LED D.O.B. Module Specs

Input Voltage	100~277 VAC / 220V ~ 277VAC
Input Frequency	50 ~ 60 Hz
Power Factor	> 0.95
Color Temperature	5700K (Neutral White) / 3000K (Warm White)
CRI	> 80
Protection	OVP / OCP / OTP
Life Time	50000Hrs



Model Name	75W	150W	100W	150W
Input Wattage	75W ± 10%	150W ± 10%	100W ± 10%	150W ± 10%
Dimension L*W(mm)	133 x 118mm	133 x 118mm	83mm(R)	83mm(R)
Light Output @5700K	8500 Lm	15000 Lm	12000 Lm	16000 Lm
LED Chip Numbers	120 PCS	120 PCS	144 PCS	144 PCS
LED Chips				
PCB Material	Aluminum PCB	Aluminum PCB	Aluminum PCB	Aluminum PCB



Model Name	250W	350W	500W	800W
Input Wattage	250W ± 10%	350W ± 10%	500W ± 10%	800W ± 10%
Dimension L*W(mm)	112mm(R)	112mm(R)	112mm(R)	112mm(R)
Light Output @5700K	37500 Lm	50000 Lm	75000 Lm	120000 Lm
LED Chip Numbers	102PCS	102 PCS	200 PCS	200 PCS
LED Chips				
PCB Material	Aluminum PCB	Aluminum PCB	Aluminum PCB	Aluminum PCB